

VERSION 1.1.1

# QUICK-START GUIDE

# RELOOP TERMINAL MIX 4

serato



# Installation and Setup

The Reloop Terminal Mix 4 is a class compliant USB plug and play device for Mac, however requires drivers for Windows. You will find these on the installation cd provided within your Reloop Terminal Mix 4.

- 1 Connect your Reloop Terminal Mix 2 to an available USB Port.
- 2 Open Serato DJ.

## Activate Serato DJ


To activate Serato DJ, click on **License** in the bottom right corner of the screen.

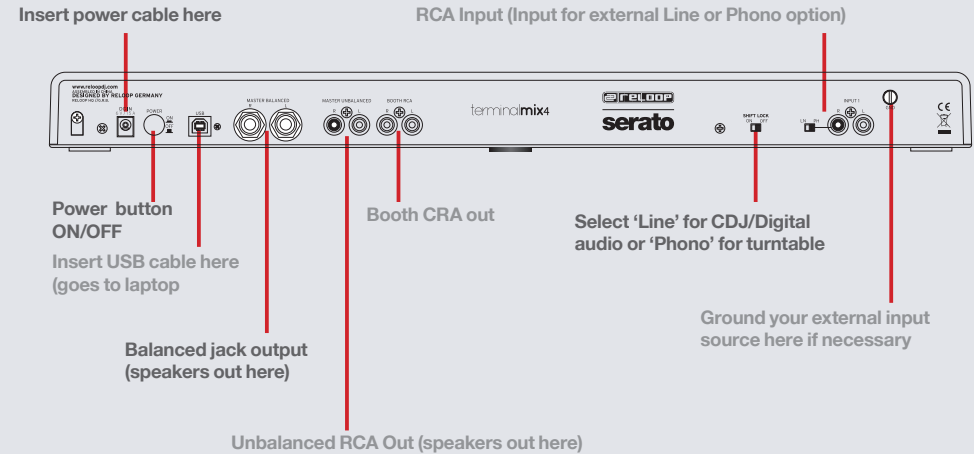
Secondly, click 

In the forthcoming online window click Activate Serato DJ. If you have not yet purchased Serato DJ, clicking on this button will take you through an online process to purchase the software.



**NOTE** If you receive an error code when activating, please contact [support@serato.com](mailto:support@serato.com)

## Manage Serato DJ Authorizations

To make changes to your activation, click  in the License panel. You can deactivate and activate your licenses here.



# Looping

You have up to 8 loops per track in Serato DJ, and the choice between either manual or auto loops. You can choose whether you have 4 loops (and 4 cuepoints) showing on screen, or 8 loops. To switch between Manual and Auto looping, click  (Manual) or  (Auto) onscreen. You can also half or double the loop length in either manual or auto modes. Press the 1/2X button to half the loop length, hold the 2X button to double the loop length, or you can use the Loop Length Knob to do the same.

**NOTE** The IN/OUT buttons are shift functions of the 1/2X and 2X buttons. You will need to hold SHIFT while pressing these buttons to use IN/OUT for manual loops.



## Manual Mode

Reloop Terminal Mix 4 Control	Serato DJ Function
1/2X + SHIFT	Set loop in point (Loop not active)
1/2X + SHIFT	Adjust loop in point (Loop active)
2X + SHIFT	Set loop out point (If loop in point is set)
2X + SHIFT	Adjust loop out point (Loop active)
Loop Length (Click Knob)	Exit Loop (Loop Active)



**NOTE** The best way to edit the in and out points of a manual loop is with the jog wheel/platter on your Reloop Terminal Mix 4.

## Auto Mode

Reloop Terminal Mix 4 Control	Serato DJ Function
Loop Length (Click Knob)	Auto Loop ON/OFF
Loop Length (Twist Knob)	Half Auto Loop Length

**NOTE** You can also save a loop to the next available free loop slot in the software. To do this, either click the  button in the manual/auto loop tab or click  on an available loop slot. Your loops are saved to the file and recalled the next time it is loaded. They are not lost if the file is moved or renamed.

# DJ-FX

The DJ-FX in Serato DJ are powered by iZotope™. Click the FX tab  to open the FX panel. Select either 1, 2 or M in the Deck Assign area  to assign the selected effect bank to a deck or Master Output. To activate an effect, click the ON button on your FX UNIT in the software, or the FX1 ON button on your controller. You can adjust effect parameters by using either software controls, or the FX1/FX2/FX3 knobs/buttons on the controller.

Reloop Terminal Mix 4 Control	Serato DJ Function
FXSEL1 Button	Effect On/Off
SHIFT + FX1-3 Button	Choose Effect
FX1 Knob	FX Dial 1
FX2 Knob	FX Dial 2
FX3 Knob	FX Dial 3
FXSEL 2 Button	FX Button 1
FXSEL 3 Button	FX Button 2

The effect time is set using the tracks BPM value, but by applying the Beats Multiplier you can increase or decrease the effect timing. Modify this by using the BEATS knob on the controller. Automatic tempo requires that the track on the deck assigned to the FX Unit has BPM information. Manual tempo mode allows you to tap in the tempo yourself.

**NOTE** To change to MANUAL mode, simply tap the TAP button until a desired rate is established. To return to AUTO mode, click and hold TAP for 1 second.

Reloop Terminal Mix 4 Control	Serato DJ Function
TAP (Button) hold for 1 second	Auto
Tap the TAP (Button) to the desired rate	FX Tap Tempo
BEATS	Beats Multiplier Dial

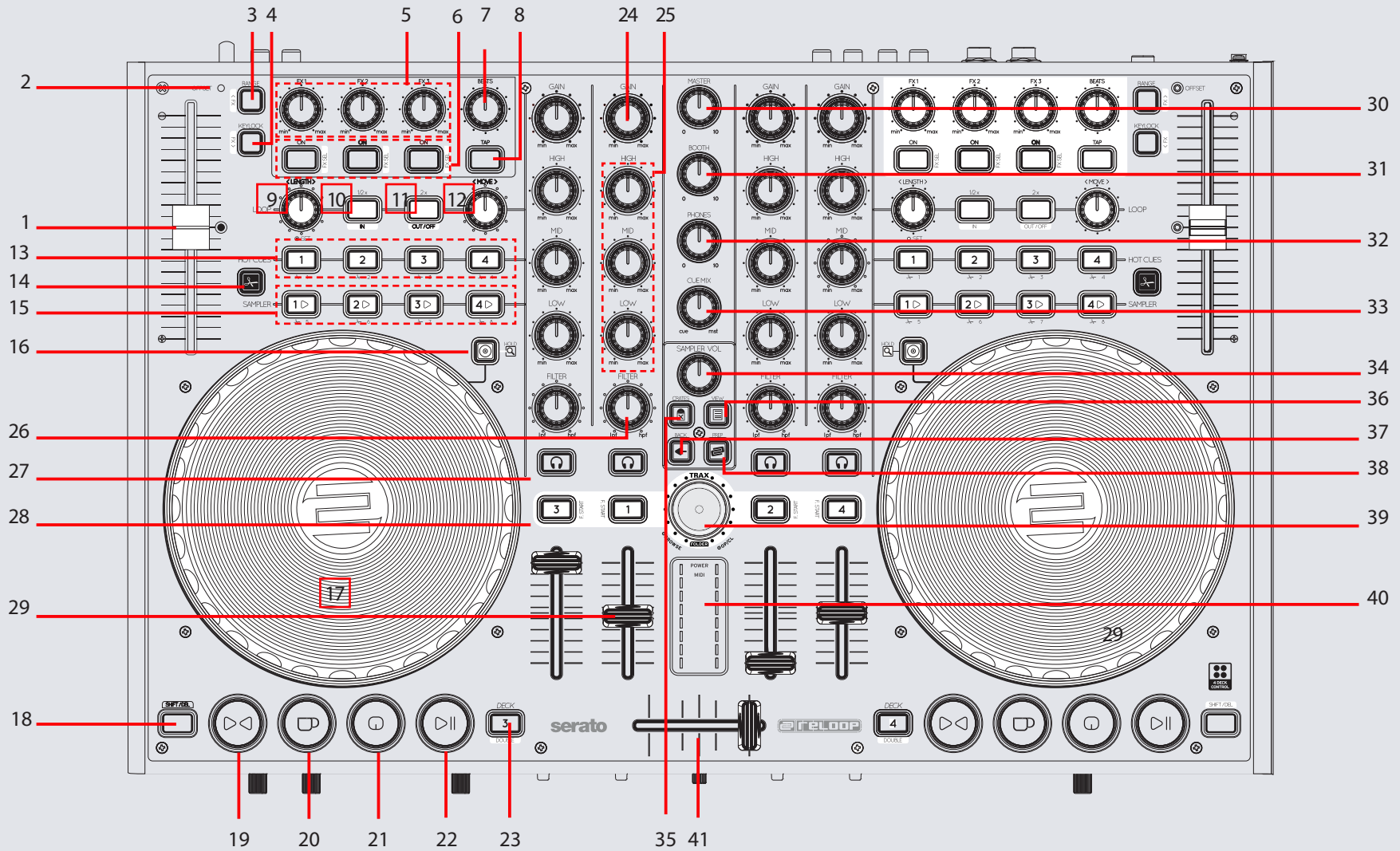
## Serato Video

Serato Video is a software plugin for Serato Software which adds the ability to playback and mix video files, use effects and fader transitions with your Serato DJ Controller, an additional MIDI controller or your mouse/keyboard. [For more information on Serato Video click here.](#)

## MIDI

The MIDI control feature in Serato DJ provides the ability to map Serato DJ software functions to MIDI controller functions such as keyboards, triggers, sliders, and knobs. Integrating MIDI controllers into your Serato DJ setup can improve live performance usability, such as hitting pads on a MIDI controller to trigger Loops and Cue Points. [For more information download the Serato DJ manual here.](#)

**NOTE** You can not MIDI Map your Terminal Mix 2, you will need to connect an additional MIDI controller to use these MIDI functions.



# Controller

#	Reloop Terminal Mix 4 Control	Serato DJ Function	Shift Modification	Click (Knob)
1	Pitch Fader	Changes Pitch of track		
2	OFFSET LED	If you switch the deck and move the pitch fader the value will be store. The LED shows whether the pitch fader is at its initial value when setting back.		
3	RANGE	Adjusts Pitch Range	Adjusts Pitch Range	
4	KEYLOCK	Keylock ON/OFF	Keylock ON/OFF	
5	FX 1-3 Knobs	Effect Parameter Dials 1-3	Change Effect	
6	FXSEL 1-3 Buttons	Effect ON/FX Button 1-2	Change Effect	
7	BEATS	Beats Multiplier		
8	TAP Button	Tap Tempo		
9	LOOP LENGTH Knob	Auto Loop ON/OFF (Click Knob) Auto Loop Length (Twist Knob)	Loop Roll ON/OFF (Click Knob) Change Loop Roll Length (Twist Knob)	Exit Loop (Manual Mode)
10	1/2X	1/2 Loop Size	Loop In/Edit Loop In Position	
11	2X	Double Loop Size	Loop Out/Edit Loop Out Position	
12	MOVE			
13	HOT CUE 1/2/3/4 buttons	Adds or triggers Cue Point	Delete Hot Cure 1-4	
15	SAMPLER 1/2/3/ buttons	Tigger Samples 1-3 (Left Deck) or 4-6 (Right Deck)	Stop Samples 1-3 (Left Deck) or 4-6 (Right Deck)	
16	HOLD button	Toggle between Scratch or Jog	Fast Library Scroll	
17	Jog Wheel	Scratch or Jogc deck	Skip	
18	SHIFT/DEL	Added Shift functionality is applied when used in conjunction with other controls		
19	Sync	Sync ON	Sync OFF	
20	Cup	Similar to temp cue but retriggers rather than momentary behaviour		

## VERSION 1.1.1

#	Reloop Terminal Mix 2 Control	Serato DJ Function	Shift Modification	Knob Press
21	Cue	Temporary Cue		Jump to start of track (more than 2 Sec elapsed) Previous track (less than 2 sec elapsed)
22	Play/Pause	Play/Pause		
23	DECK	Select Deck 1/3 (Left Deck) or 2/4 (Right Deck)		
24	GAIN Knob	Adjust channel gain		
25	EQ Knobs	Adjust Low/Mid/High		
26	FILTER Knob	LP/HP Filter combo adjust		
27	Channel Cue	Headphone Cue ON/OFF for selected channel		
28	Load	Load track to selected deck		Activate Fader Start
29	Channel Fader	Adjusts channel volume		
30	MASTER	Adjusts master volume		
31	BOOTH	Adjusts booth volume		
32	PHONES	Adjusts headphone volume		
33	CUE MIX	Adjusts between Cue and Master in your headphones		
34	SAMPLER VOL	Adjusts the master volume of the sample player		
35	Crates	Cycle REC/FX/SP-6 Panels		
36	View	Cycle view modes		Switches between 2 and 4 decks
37	Back	Toggles focus between library/crates/open panels		
38	Prepare	Loads track to prepare area		
39	Track Navigation	Scroll through currently focussed area (library/crates/etc)		
40	VU Meter	LED representation of volume		
41	Crossfader	Crossfades between the two channels		

serato



**NOTE:** SHIFT button is used with other buttons that have shift modifier functions.

**NOTE:** #28 When used with SHIFT, activates Fader Start for each deck. This means the track will stop when the channel fader is down, and the track will start when the channel fader is up. This button will flash when Fader Start is activated.