



# RANE SEVENTY-TWO mkII Quick-Start Guide



# Setup

## Serato Software

The RANE SEVENTY-TWO mkII is a “Serato DJ Pro hardware unlocked” device, meaning it works with Serato DJ Pro out of the box.

**Please ensure you have the latest version of Serato DJ Pro installed:**

[Click here to download Serato DJ Pro](#)

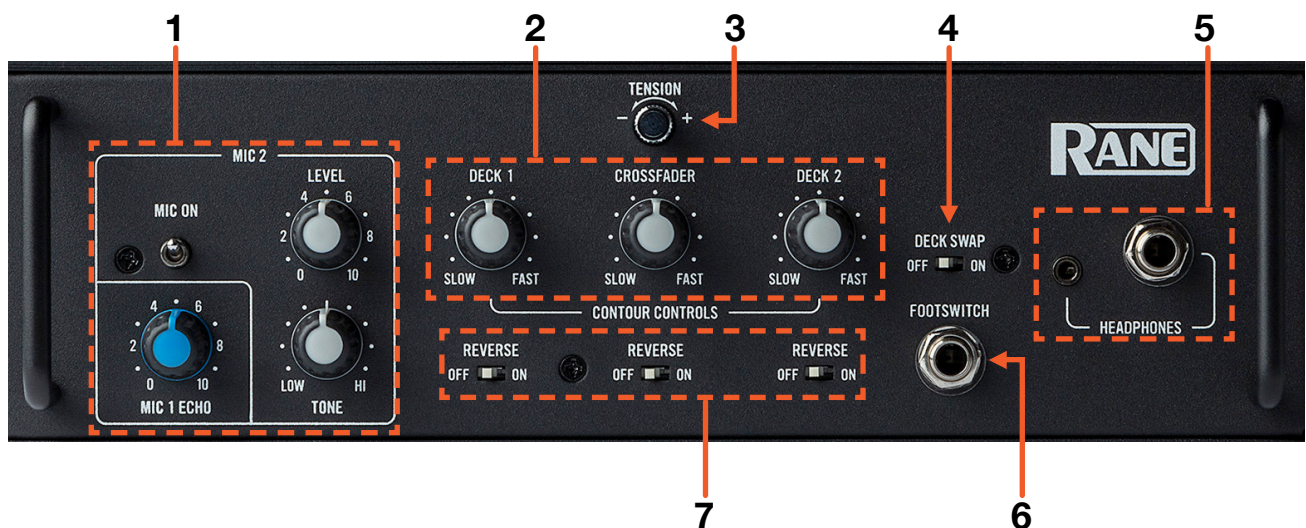
## Driver Software

The RANE SEVENTY-TWO mkII does not require manufacturer specific drivers on Mac operating systems, and is plug & play with Serato DJ Pro. You may be asked to install the RANE Control Panel, which allows you to adjust mixer settings.

On Windows you will need to install a driver available from RANE’s website, or when prompted after opening Serato DJ Pro, while the mixer is connected.

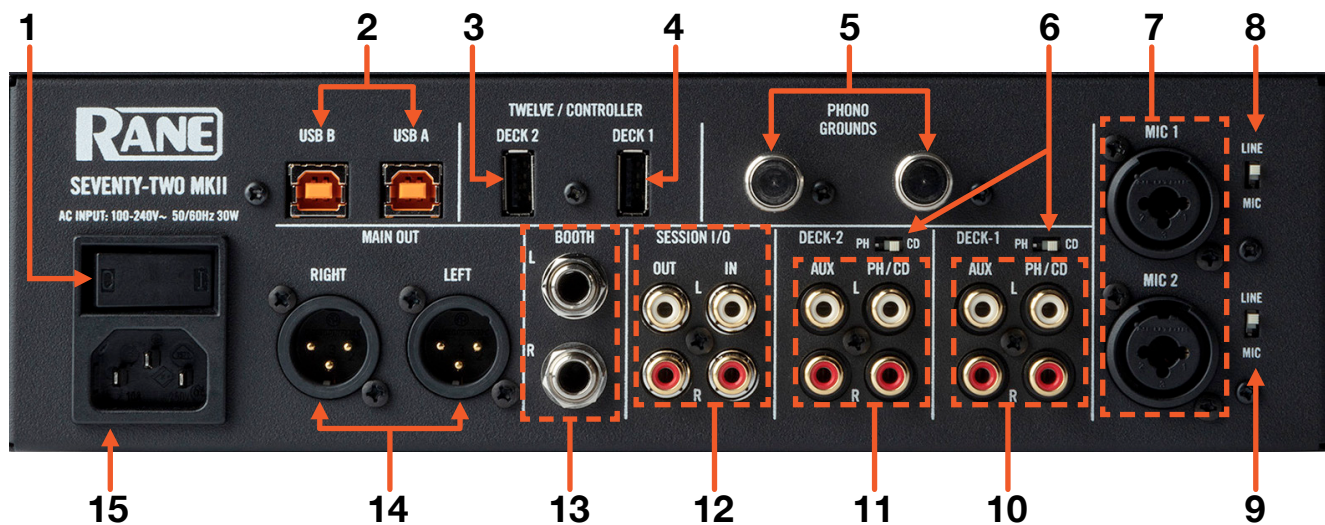
We also recommend that you have the latest firmware installed for the RANE SEVENTY-TWO mkII, which can be found on RANE’s website.

## Overview



#	RANE SEVENTY-TWO mkII CONTROL	FUNCTION
1	MIC 2 CONTROL / MIC 1 ECHO	Turn on Mic 2 input, adjust level, tone & apply Mic 1 Echo effect
2	CONTOUR CONTROLS	Adjust channel & crossfader contours
3	TENSION	Controls the tension of the crossfader
4	DECK SWAP	When on Swap the left and right channel faders are swapped
5	HEADPHONES	Connect headphones to 3.5mm and 6.5mm outputs
6	FOOTSWITCH	Connect 6.5mm foot switch control device
7	REVERSE	Toggle reverse of respective channel and crossfaders

# Overview



#	RANE SEVENTY-TWO mkII CONTROL	FUNCTION
1	POWER SWITCH	Turn on SEVENTY-TWO mkII
2	USB PORT A / B	Connect USB cable from PC
3	DECK 2 USB ACCESSORY PORT	Connect RANE TWELVE, TWELVE mkII or other USB accessory
4	DECK 1 USB ACCESSORY PORT	Connect RANE TWELVE, TWELVE mkII or other USB accessory
5	PHONO GROUNDING POST	Connect grounding cable from phono turntable connected to Deck 1 or Deck 2
6	PHONO / CD SWITCH	Change Deck 1 or Deck 2 between PHONO or CD input
7	MIC INPUT	Microphone 1 & 2 1/8" & 1/4" input
8	LINE / MIC SWITCH 1	Toggle between using Mic input 1 as Line or Mic level inputs
9	LINE / MIC SWITCH 2	Toggle between using Mic input 2 as Line or Mic level inputs
10	DECK 1 INPUTS	AUX or PHONO/CD channel inputs
11	DECK 2 INPUTS	AUX or PHONO/CD channel inputs
12	SESSION I/O	Connect input or output devices
13	BOOTH OUT	1/4" / 6.5mm booth output
14	MAIN OUT	XLR output
15	AC IN	AC power input



# Overview



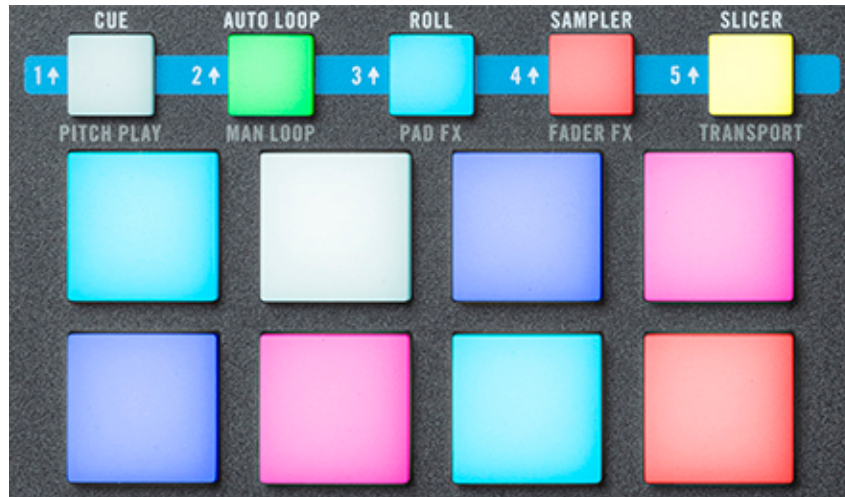


# Overview

#	RANE SEVENTY-TWO mkII CONTROL	FUNCTION	SHIFT FUNCTION
1	SCROLL	Turn to scroll Library, press in to load track to respective deck, double press in to instant double	Turn for Fast Library scroll.
2	BACK	Toggles focus between Library & Crate list	Toggle focus to Prepare panel
3	VIEW	Cycle between Library & Waveform view	Show SEVENTY-TWO mkII mixer MENU
4	EFFECTS	Show Effects section on Display	Tap BPM
5	DISPLAY	Displays mixer information	
6	FX SECTION	<a href="#">SEE FX FOR MORE INFORMATION</a>	
7	CHANNEL SELECTOR/GAIN/EQ/FILTER	Channel selector, gain, EQ & filter controls per deck	
8	MAIN	Adjusts master volume output	
9	BOOTH	Adjusts booth volume output	
10	SESSION OUT	Adjusts Session Out level	
11	CUE SECTION	Adjust cue level, cue mix, and toggle split cue	
12	FX TOGGLE & TOUCH FX	Toggle FX with paddle switch by latch (switch up), or momentary (switch down and hold), & toggle Touch FX	
13	SHIFT	Used with other controls that have SHIFT modifier functions	
14	PARAMETER LEFT/RIGHT	Adjust parameter in performance pad modes per deck	
15	CHANNEL FADER	Channel volume	
16	CHANNEL CUE	Cues selected channel for headphone monitoring	
17	CROSSFADER	Crossfade audio between channel A-B	
18	PERFORMANCE PAD SECTION	<a href="#">SEE PERFORMANCE PADS FOR MORE INFORMATION</a>	
19	SAMPLER SECTION	Adjust Sampler level, filter, toggle effects	
20	SESSION CUE	Monitor Session In	
21	SESSION IN	Adjust Session In level	
22	MIC 1 SECTION	Adjust Mic 1 level, tone, toggle on/off & echo	

# Performance Pads

The RANE SEVENTY-TWO mkII comes with 8 RGB Performance Pads per deck (for a total of 16 pads), which can be used in 13 different pad modes, and 2 further user-mappable pad modes.



The first 5 modes can be accessed by pressing the pad mode buttons once, and are as follows:

- **CUE mode:** Pads 1-8 trigger Serato DJ Pro Cue points, and if no Cue point is present on that slot/pad, will set a Cue point. Holding SHIFT while pressing a pad will clear the Cue point from that pad/slot.
- **AUTOLOOP mode:** Pads 1-8 trigger Autoloops of varying sizes, while pressing that same pad again will deactivate that Autoloop. Press the Parameter Left & Right buttons to decrease or increase the Autoloop size, and press the Parameter Left & Right buttons whilst holding SHIFT, to move the loop left or right. Use the 'Shift Autoloop range' controls in Serato DJ Pro to change the 8 selected loop size options.
- **ROLL mode:** In this mode holding pads 1-8 activates a loop roll of varying sizes. Release the pad to exit the Loop Roll. Use the 'Shift Autoloop range' controls in Serato DJ Pro, or the Parameter Left & Right buttons on the mixer, to change the 8 selected loop roll size options.
- **SAMPLER mode:** Press pads 1-8 to trigger samples loaded into the Serato DJ Pro Sampler. Hold SHIFT while pressing a pad to stop the sample playback once triggered, or load a sample to the respective Sampler slot if no sample is loaded. Press the Parameter Left & Right buttons to change through Sampler Banks A/B/C/D, and hold SHIFT while pressing them to change the Sampler output 1/2/A/M.
- **SLICER mode:** In this mode a specified range (or domain) is divided into eight equal sections, and these eight sliced sections are assigned to the respective performance pads (1-8). The domain shifts as the track duration elapses. Pressing pads 1-8 triggers the respective 'slice', Press Parameter Left & Right to set the quantization for the slicer function, which can be set in four ways: 1/8, 1/4, 1/2 and 1. Hold SHIFT while pressing Parameter Left & Right to change the domain size.



# Performance Pads



The next 5 modes can be accessed by pressing the respective pad mode button twice, and are as follows:




- **PITCH PLAY mode:** Press the 'CUE' mode button twice to enter PITCH PLAY mode. In this mode, pads 1-8 play Cue points over variable pitch ranges. See the 'Pitch Play' section for more information.
- **MANUAL LOOP mode 1:** Press 'AUTOLOOP' mode button twice to enter MANUAL LOOP mode 1. In this mode, pads 1-4 select loop slots 1-4 (or saves a loop to the respective slot if empty), while pad 5 sets the Loop In point, pad 6 sets the Loop Out point, pad 7 toggles between Loop On / Loop Off, and pad 8 retriggers the Loop. Holding SHIFT while pressing pads 1-4 will remove the saved loop from its respective slot. Press the Parameter Left & Right buttons to decrease or increase the loop size, and press the Parameter Left & Right buttons whilst holding SHIFT, to move the loop left or right. Use the 'Shift Autoloop range' controls in Serato DJ Pro to change the 8 selected loop size options.
- **PAD FX mode:** Press 'ROLL' mode button twice to enter PAD FX mode, which offers predetermined, combined FX at the touch of a pad. Refer to the RANE user manual for further information regarding this mode.
- **FADER FX mode:** Press 'SAMPLER' mode button twice to enter FADER FX mode, which offers predetermined fader FX while holding the pads. Refer to the RANE user manual for further information regarding this mode.
- **TRANSPORT mode:** Press 'SLICER' mode button twice to enter TRANSPORT mode. In this mode you can control virtual deck transport operation. Pad 1 & 2 control Pitch Ben down & up, Pad 3 & 4 control Pitch Nudge down & up, while holding SHIFT and pressing pad 3 or 4 will reset pitch to zero. Pad 5 toggles Keylock (or Pitch 'n Time DJ if enabled), and holding SHIFT while pressing pad 5 toggles between INT and REL or ABS playback modes. Press pad 6 turns on SYNC, and holding SHIFT while pressing pad 6 disables SYNC. Pad 7 triggers the TEMP CUE, or sets one if none is present on the loaded track. Holding SHIFT while pressing pad 7 will return to the start of the track, and pressing it quickly again will load the previous track. Finally, pressing pad 8 toggles between play and paused states, and pressing it while holding SHIFT toggles Stutter Play.

The final 5 modes can be accessed by holding SHIFT and pressing the respective pad mode button:

- **USER mode 1:** Press the 'CUE' mode button while holding SHIFT to enter USER mode 1. In this mode, you can assign pads 1-8 to different functions inside Serato DJ Pro, using the MIDI mapping feature, and save it as your own pad mode. Refer to the [MIDI Mapping with Serato DJ Pro](#) article, for more information on how to map MIDI functions.
- **MANUAL LOOP mode 2:** Press the 'AUTOLOOP' mode button while holding SHIFT to enter MANUAL LOOP mode 2. In this mode, pads 5-8 select loop slots 5-8 (or saves a loop to the respective slot if empty), while pad 5 sets the Loop In point, pad 6 sets the Loop Out point, pad 7 toggles between Loop On / Loop Off, and pad 8 retriggers the Loop. Holding SHIFT while pressing pads 1-4 will remove the saved loop from its respective slot. Press the Parameter Left & Right buttons to decrease or increase the loop size, and press the Parameter Left & Right buttons whilst holding SHIFT, to move the loop left or right. Use the 'Shift Autoloop range' controls in Serato DJ Pro to change the 8 selected loop size options.
- **USER mode 2:** Press the 'ROLL' mode button while holding SHIFT to enter USER mode 2. In this mode, you can assign pads 1-8 to different functions inside Serato DJ Pro, using the MIDI mapping feature, and save it as your own pad mode. Refer to the [MIDI Mapping with Serato DJ Pro](#) article, for more information on how to map MIDI functions.
- **SAVED FLIP mode:** Press the 'SAMPLER' mode button while holding SHIFT to enter SAVED FLIP mode. In this mode, pressing pads 1-6 triggers saved Flips, from saved Flip slots 1-6. Holding SHIFT while pressing pads 1-6 will turn the respective Flip on and pressing it again will turn the Flip off.
- **SLICER LOOP mode:** Press the 'SLICER' mode button while holding SHIFT, to enter SLICER LOOP mode. In this mode a specified range (or domain) is divided into eight equal sections, and these eight sliced sections are assigned to the respective performance pads (1-8), however, unlike SLICER mode, the domain does not shift and is a static 'loop'. Press pads 1-8 to trigger the respective 'slice', while pressing the Parameter Left & Right buttons to set the quantization for the slicer function, which can be set in four ways: 1/8, 1/4, 1/2 and 1. Hold SHIFT while pressing Parameter Left & Right buttons to change the domain size.

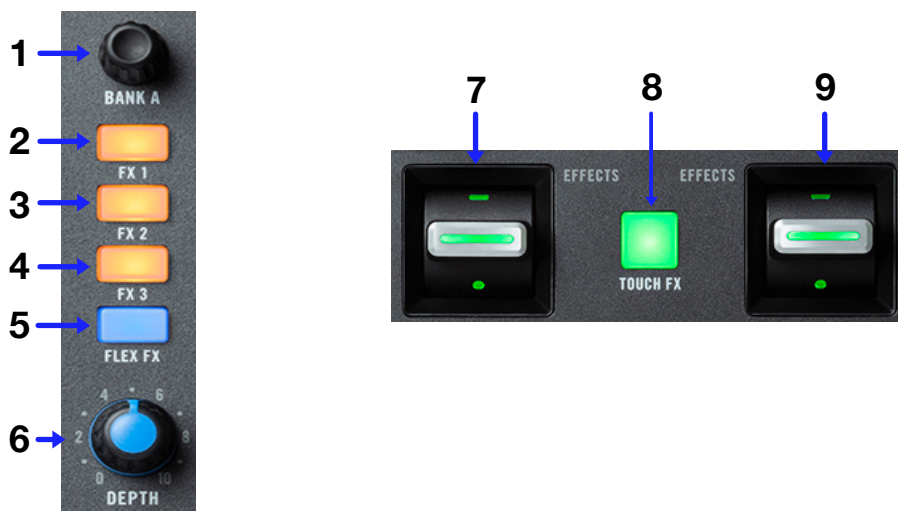
# FX

The RANE SEVENTY-TWO mkII allows for a myriad of FX, via both built-in hardware FX, and control of Serato DJ Pro's iZotope™ DJ-FX. The large display built into the mixer, allows you to see FX information at a glance. For the purpose of this guide, control of the software DJ-FX will be focused on. Please refer to the RANE SEVENTY-TWO mkII user guide for detailed information on using the hardware FX.

Click on the FX **REC** **FX**  button in the upper left-hand corner of Serato DJ Pro, to expose the DJ-FX panel, then, in the DJ-FX panel, select either multi  or single  FX modes.

To read more about general use of DJ-FX in Serato DJ Pro, please refer to the [DJ-FX](#) section of the Serato DJ Pro user manual.

## Controls

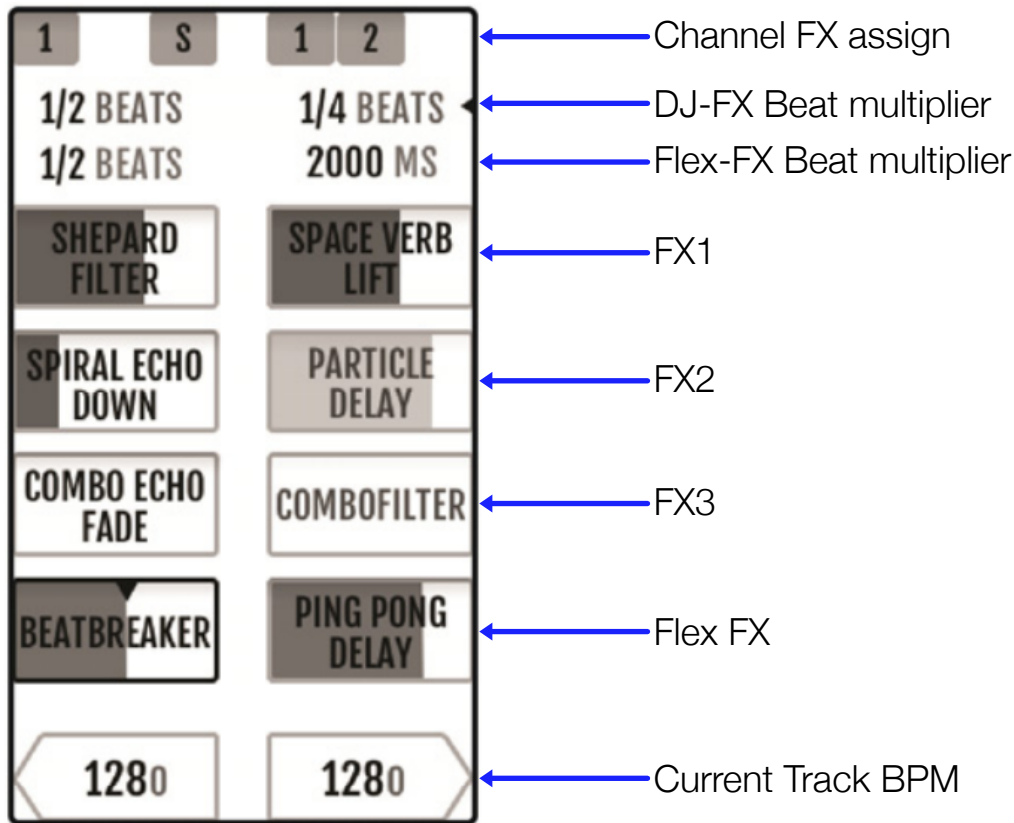


#	FX CONTROL	SINGLE FX FUNCTION	MULTI FX FUNCTION
1	BANK A / B	Turn to adjust DJ-FX Parameter or select DJ-FX. Press knob in to toggle between FX selection and FX parameter adjustments	Turn to adjust DJ-FX Parameter 1 or select DJ-FX 1. Press knob in to toggle between FX selection and FX parameter adjustments
2	FX 1	Press to engage FX1	ARM FX 1 (Lit when armed). Use Effects switch to turn on
3	FX 2	N/A	ARM FX 2 (Lit when armed). Use Effects switch to turn on
4	FX 3	N/A	ARM FX 3 (Lit when armed). Use Effects switch to turn on
5	FLEX FX	Press to engage Flex FX	Press to engage Flex FX
6	DEPTH	Turn to increase Flex FX depth	Turn to increase Flex FX depth
7	EFFECTS SWITCH 1	Pull up to latch effects or push down and hold for momentary effects	Pull up to latch effects or push down and hold for momentary effects
8	TOUCH FX	Used to engage hardware Touch FX. Refer to RANE SEVENTY-TWO mkII user guide for more information	Used to engage hardware Touch FX. Refer to RANE SEVENTY-TWO mkII user guide for more information
9	EFFECTS SWITCH 2	Pull up to latch effects or push down and hold for momentary effects	Pull up to latch effects or push down and hold for momentary effects



# FX

## FX Display



## Using the FX

1. Tap the effect you wish to manipulate on the display. Once successfully selected, the effect will be highlighted with a white border around it.
2. Turn the Bank A or B knob to change the depth for that effect. Then press the FX1/2/3 button corresponding to the FX you wish to arm. In Single-FX mode only FX1 can be armed.
3. Push the Effects switch up for a latch (perpetual) effect, or pull it down and hold for a momentary (temporary) effect.
4. Tap the DJ-FX Beat Multiplier on the display, then turn the BANK A or B knob to adjust FX timing if desired.
5. Tap the Channel FX assign on the display to assign FX to channels per FX Bank (Channels 1, 2, or Sampler), then press 'Ok' to confirm.
6. Tap the 'Flex FX' button to engage Flex FX. Tap the Flex FX on the display, then push the BANK A or B knob and turn to change Flex FX. Use the Depth knob to adjust Flex FX amount. This allows for post-fader FX to be applied.

# Pitch Play

Holding SHIFT and pressing the CUE performance pad mode button on the RANE SEVENTY-TWO mkII will enable Pitch Play mode. In this mode you can play Cue Points over variable pitch ranges.

There are 3 key ranges to choose from. The following tables show pitched key ranges (in Semitones) while using the 8 performance pads in Pitch Play mode. To toggle between key ranges press the Parameter left & right buttons.

The root key pad (0) is always lit white, which will play the cue point at its regular pitch.

Pressing Parameter left & right while holding SHIFT will shift up or down a single semitone. In Pitch Play mode, pressing a pad will pitch the currently selected cue point up or down the following ranges:

## Up Range: (Up 7 Semitones)

+4	+5	+6	+7
0	+1	+2	+3

## Middle Range: (Up 3/Down 4 Semitones)

0	+1	+2	+3
-4	-3	-2	-1

## Down Range: (Down 7 Semitones)

-3	-2	-1	0
-7	-6	-5	-4

When Pitch Play mode is first enabled, the middle range is selected. If a new track is loaded, key mode will default to middle range.

PITCH PLAY can only pitch one Cue point at a time. To change the selected Cue, hold the SHIFT button and press a performance pad where the cue point you want to select would be (as shown in the CUES performance pad mode). While holding SHIFT, press the corresponding performance pad for:

Cue 1	Cue 2	Cue 3	Cue 4
Cue 5	Cue 6	Cue 7	Cue 8

The selected cue point defaults to Cue Point 1 on track load, even if instant doubled. If a pad with no cue point is selected, then a new cue point will be created. Deleting a cue point however, is not possible in PITCH PLAY mode. Range is remembered if user goes to another pad mode, then back to key mode. If a new track is loaded, key mode will default to middle range.

**NOTE:** Pitch Play mode is available once the Pitch 'n Time DJ Expansion Pack has been activated in the MY SERATO window. Make sure "Enable Pitch 'n Time DJ" is checked in the Expansion Pack tab of the SETUP screen.



# Flip

Flip is an Expansion Pack for Serato DJ Pro. Flip controls are only available once the Flip expansion pack has been purchased and activated. The expansion pack can be purchased in-app through the My Serato window in Serato DJ Pro or online at <https://serato.com/dj/pro/expansions/flip>

In Cue mode, the RANE SEVENTY-TWO mkII's Parameter Left button arms & enables Flip for recording, and the Parameter Right button triggers a saved Flip. Holding SHIFT while pressing each button toggles Flip Loop and Flip On/Off respectively.

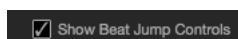
For more information on using Flip, please check-out our [Flip User Guide](#).

# DVS

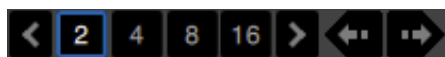
The RANE SEVENTY-TWO mkII is a Serato DVS hardware unlocked, meaning it activates the Serato DVS expansion pack when connected to your computer, thus allowing you to use turntables or CD players to control Serato DJ Pro using NoiseMap™ Control Tone records or CDs.

# Beat Jump

To activate Beat Jump, open the Setup screen and under the DJ preferences tab turn on “Show Beat Jump Controls”.



When you close the Setup screen you will see Beat Jump controls underneath the existing Auto Loop values on each deck. Checking this box will turn on Beat Jump features in the deck area and let you control Beat Jump from on your supported Serato DJ Pro hardware.



When the Beat Jump option is enabled, performance pad modes AUTO LOOP or ROLL mode will use the bottom row of 4 pads (pads 5-8) as Beat Jump controls. This is designed to mirror the change in deck Auto Loop area (from 8 Auto Loop sizes to 4 Auto Loop sizes + Beat Jump controls).

# MIDI

The MIDI feature in Serato DJ Pro provides the ability to remap Serato DJ Pro software functions to your primary Serato controller, interface or mixer. You can also assign controls to a secondary MIDI controller to further enhance your performance.

[For more information on MIDI mapping with Serato DJ Pro click here](#)

To remap your supported Serato device, open the SETUP screen and click the MIDI tab. If your Serato device supports hardware remapping, it will show up in the MIDI Devices list at the top.

Select your connected device from the MIDI Devices list and make sure the “Allow Serato Hardware Remapping” option is checked.

Allow Serato Hardware Remapping

Once checked, the MIDI assign button at the top of the screen will become available for you to start remapping.

You can save, edit or delete MIDI presets in the MIDI tab of the SETUP screen. Clicking ‘Restore Defaults’ will erase any custom mappings for all connected devices and revert their functions back to default.

# Help

## Show Tooltips

Click on the **Help** button in the upper right-hand corner of Serato DJ Pro, then **Show tooltips** to enable tooltips. Tool tips provide a handy way to learn the various features of Serato DJ Pro.

Move the mouse over a section of the screen to bring up a context sensitive tool tip.

## Watch Tutorials

Click on the **Help** button in the upper right-hand corner of Serato DJ Pro, then **Watch tutorials** to launch your default internet browser and watch tutorials, to help you get familiar with Serato DJ Pro.

## Get Support

Click on the **Help** button in the upper right-hand corner of Serato DJ Pro, then **Get support** to launch your default internet browser and navigate to the Serato DJ Pro knowledge base, where you can find helpful articles and guides on Serato DJ Pro. Alternatively, type in the  **Go** box, with keywords, to search the Serato DJ Pro knowledge base for specific, related topics.