

QUICK-START GUIDE

Denon DJ MC6000MK2

serato



DJ

Installation and Setup

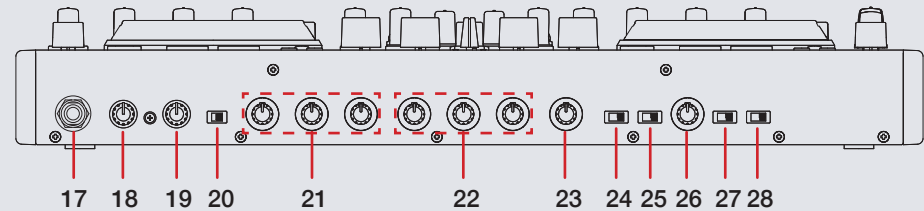
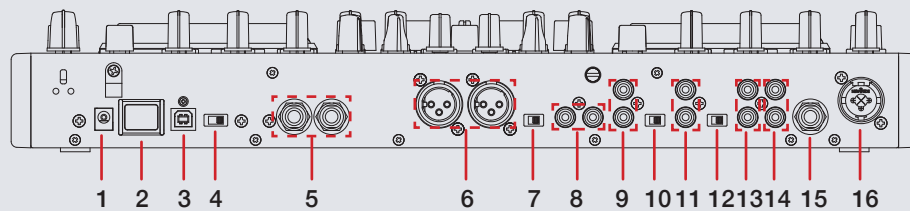
The Denon DJ MC6000MK2 is a class compliant USB plug and play device for Mac and Windows.

NOTE: Please ensure you have the latest drivers AND firmware updates, which may be required in order to be compatible with Serato DJ. Please go to <http://serato.com/dj/support>

1. Download and install the latest version of Serato DJ from <http://serato.com/dj/downloads>
2. After installing drivers, connect your Denon DJ MC6000MK2 to an available USB Port.
3. Open Serato DJ.
4. The Denon DJ MC6000MK2 platters require a few touches by the user in order to calibrate to their environment. After power up and start of Serato DJ, tap the platters a few times to set their sensitivity.

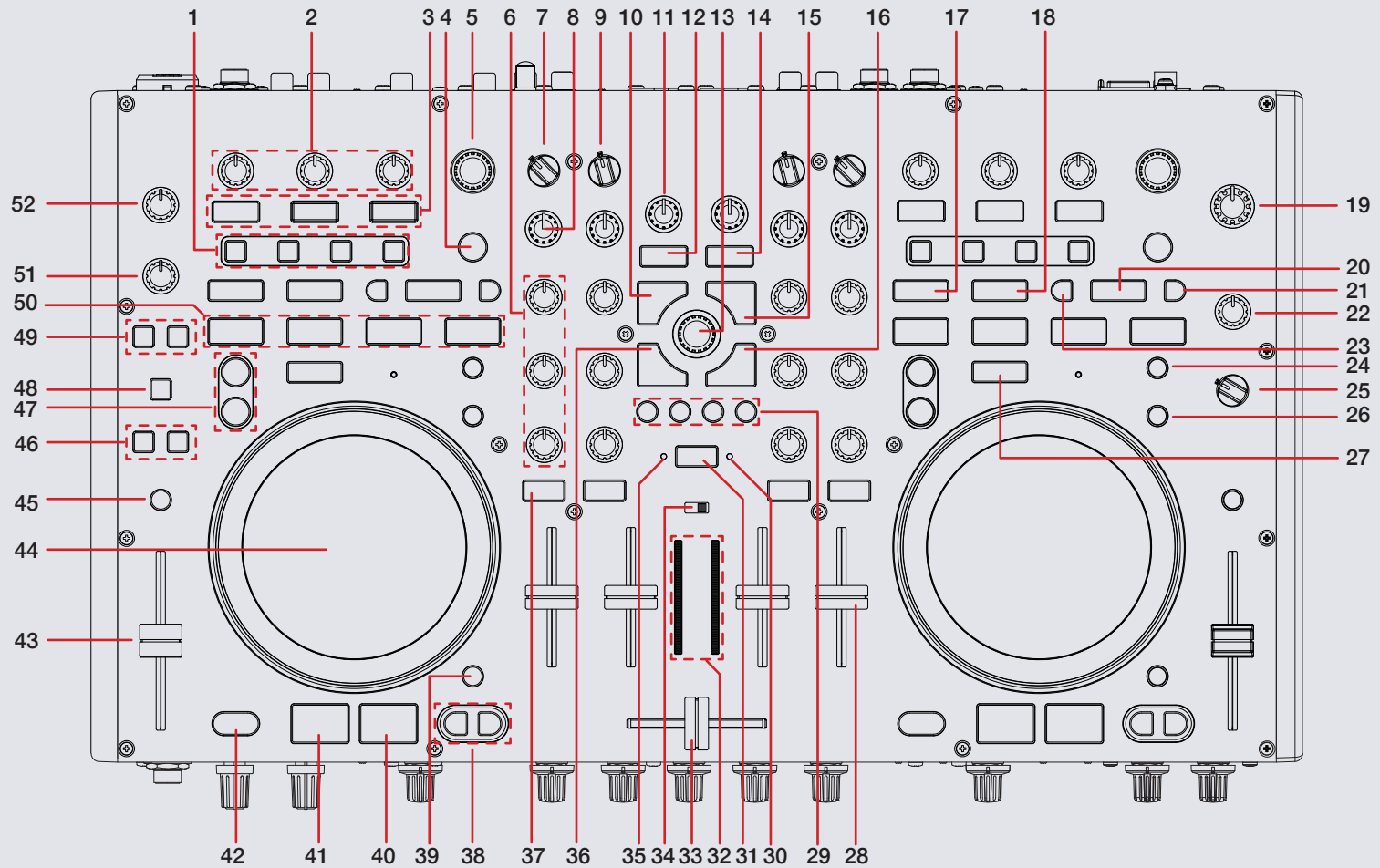
Serato DJ Activation

To find out how to activate Serato DJ by either starting your free 14 day trial, or purchasing a license for Serato DJ, [click here](#) for the most up to date information.



#	Denon DJ MC6000MK2 Control
1	DV 12V Power input
2	Controller ON/OFF
3	USB 2.0 Input
4	USB Audio line select switch
5	Balanced Booth Output L/R
6	Balanced Master XLR Output L/R
7	Mono/Stereo switch
8	Unbalanced RCA Master Output
9	Line 4 L/R Input
10	Phono/Line Switch
11	Line 3 L/R Input
12	Phono/Line Switch
13	Line 2 L/R Input
14	Line 1 L/R Input
15	MIC 2 TRS Input
16	MIC 1 XLR Input
17	Headphones Input
18	Headphone volume
19	Cue/Master volume
20	Split Cue switch
21	MIC 1 EQ LOW/MID/HI
22	MIC 2 EQ LOW/MID/HI
23	MIC Echo
24	Fader Assignment CH3 L/Thur/R
25	Fader Assignment CH1 L/Thur/R
26	X Fader Curve Dial
27	Fader Assignment CH 2 L/Thur/R
28	Fader Assignment CH 4 L/Thur/R

Controller



NOTE: The **SHIFT** button is used with other buttons that have shift modifier functions.

#	Denon DJ MC6000MK2 Control	Function	Shift Function
1	CH ASSIGN	Applies FX to selected channels	
2	FX KNOBS	Adjust Slot 1-3 FX Parameter	Turn Knob 1 (Select Effect in Slot 1), Turn Knob 2 (Select Effect in Slot 2), Turn Knob 3 (Select Effect in Slot 1)
3	FX BUTTONS (P1,2,3)	Slot 1-3 Effect On/Off	Button 1 (Select Effect in Slot 1), Button 2 (Select Effect in Slot 2), Button 3 (Select Effect in Slot 1)
4	TAP	Tap to set desired BPM/hold to reset	
5	BEATS	Turn to adjust Beats Multiplier setting/ push down to reset to 1/1	
6	EQ (knobs)	Adjust HI, MID and LOW	
7	INPUT SELECT	Toggles between available Line channels LN3, LN1, LN2, LN4 and PC mode	
8	CH LEVEL	Toggles focus between library, crates and open panels	
9	INPUT SELECT	Toggles between available Line channel LN1 and PC mode	
10	LOAD	Load selected track to Deck 1 (Press twice to Instant Double)	
11	FILTER	LP/HP filter combo adjust for channel 1	
12	FILTER ON	Turn filter combo on/off for channel 1	
13	BROWSER	Browses through currently focused area (library/crates/open panels) Click to move between library and crates	
14	FILTER ON	Turn filter combo on/off for channel 2	
15	LOAD	Load selected track to Deck 2 (Press twice to Instant Double)	
16	FWD	Toggles focus between library, crates and open panels	
17	IN	Set loop in point (Loop not active)/Adjust loop in point (Loop active)	
18	OUT	Set loop out point (Loop in point set)/Adjust loop out point (Loop active)	
19	MASTER LEVEL	Adjusts the master output's audio level	

NOTE: The **SHIFT** button is used with other buttons that have shift modifier functions.

#	Denon DJ MC6000MK2 Control	Function	Shift Function
20	AUTO LOOP	Activates Auto Loop	
21	-	Halve Auto Loop length	
22	BOOTH LEVEL	Adjust Booth Output	
23	+	Double Auto Loop Length	
24	HOT CUE/SAMPLE	Set/Trigger Cue (1,2,3,4) / Sample trigger (1,2,3,4)	Delete Cue 1,2,3,4/ Shift + Sample + 1,2,3,4 stops sample playback
25	BOOTH ASSIGN	Set booth assign to channel output 1,2,3,4 or master output	
26	CENSOR/SLIP	Censors the playing track while pressed	Enables Slip mode.
27	SHIFT	SHIFT button is used with other buttons that have shift modifier functions	
28	CHANNEL FADERS	Adjusts the Channel Output	
29	PANEL/VIEW/AREA/LIST	Switches through available view and display options. See Display Options table for more information	
30	VIDEO LED	Links crossfader to video channels only	
31	X-F LINK	Links the crossfader to Serato Video and/or audio channels	Scrolls through Video transitions
32	LED METER	Monitors the audio levels of the assigned Output (see LED METER ASSIGN for more detail)	
33	CROSSFADER	Crossfades the output sound between Deck 1 & 2	
34	LED METER ASSIGN	LED meter assigning for CH1/2, CH3/4 or MASTER outputs	
35	AUDIO LED	Links crossfader to audio channels only	
36	BACK	Toggles focus between library, crates and open panels	
37	CUE	Cue selected channel in headphones	
38	PITCH BEND +/-	Press or hold down either of these buttons to temporarily adjust the track's playback speed. When released, the track playback will return to the speed designated by the PITCH FADER.	Fast Forward/Rewind

NOTE: The **SHIFT** button is used with other buttons that have shift modifier functions.

#	Denon DJ MC6000MK2 Control	Function	Shift Function
39	VINYL	Toggles between Vinyl/Jog Modes	
40	PLAY/PAUSE	Play/Pause track	
41	CUE	Add or Jump to Temporary Cue	
42	SYNC	Sync On	Sync Off (Press twice to return to Absolute Pitch when in Relative Mode)
43	PITCH FADER	Adjust Pitch	When in Sync mode, used to disable the Pitch Fader temporarily and change the zero position
44	PLATTER	Adjust/Scratch or Jog	Search
45	KEYLOCK	Enable Keylock	Cycle through available Tempo Range
46	ECHO ON 1/2	Adjust Mic Echo Wet/Dry for Mic Channels	
47	DECK LAYER ASSIGN	Swap deck layer	
48	DUCKING	Lowers master signal when pressed down/will stop ducking on release	Routes Mic input to the Booth output
49	MIC ON 1/2	Turn on/off MIC channel 1 or 2	
50	HOT CUE MODE	Activates Hot Cue (1-4)	
51	MIC 2 LEVEL KNOB	Turn to adjust MIC 2 level	
52	MIC 1 LEVEL KNOB	Turn to adjust MIC 1 level	

Display Options

Denon DJ MC6000MK2 Control	Manual Loop Mode
Panel	Cycles through REC, FX and SP-6 panels
View	Cycles through the available deck views
Area	Navigates through the Files, Browse, Prepare and History panels
List	Switches between Simple List and Album Art list library view modes

Looping


You have the choice of Auto or Manual looping within Serato DJ with the Denon DJ MC6000MK2.



Denon DJ MC6000MK2 Control	Manual Loop Mode
IN	Set loop in point (Loop not active)
IN	Edit start of loop point with platter (Loop active)
OUT	Set end of loop point (If Loop in point set)
OUT	Edit end of loop point (Loop active)
AUTO LOOP	Exit Manual Loop

NOTE: The best way to edit the start and end points of a manual loop is with the jog wheel/platter on your Denon DJ MC6000MK2.

Denon DJ MC6000MK2 Control	Auto Loop Mode
AUTO LOOP	Start Auto Loop
-	Halve Auto Loop length
+	Double Auto Loop length

DJ-FX

The DJ-FX in Serato DJ are powered by iZotope™. Click the FX tab  to open the FX panel. Select either 1, 2, 3, 4 or M to assign the selected effect bank to a deck or Master Output.

There are two available modes in the DJ-FX. Single FX Mode allows you to select one effect per FX bank, and has multiple parameters that can be adjusted. Multi FX Mode allows you to select up to three effects per FX bank, and adjust only one parameter, the FX Depth. The same effects available in Single FX mode are available in Multi FX mode, as well some additional presets. You can select between the two FX modes by clicking either the Single FX mode button  or Multi FX mode button .

MC6000MK2 Control	Single FX Mode	Multi FX Mode	Shift
FX P1 BUTTON	Effect On/Off	Slot 1 Effect On/Off	Slot 1 Select Effect
FX P2 BUTTON	Effect Modifier 1 On/Off	Slot 2 Effect On/Off	Slot 2 Select Effect
FX P3 BUTTON	Effect Modifier 2 On/Off	Slot 3 Effect On/Off	Slot 3 Select Effect
FX KNOBS	Adjust FX Parameter (1-3)	Adjust FX Parameter (1-3)	Adjust Beats Multiplier

Serato Video

Serato Video is an Expansion Pack for Serato Software which adds the ability to playback and mix video files, use effects and fader transitions with your Serato DJ hardware, an additional MIDI controller or your mouse/keyboard.

For more information on Serato Video go to <http://serato.com/video>

When using the MC6000MK2 with Serato Video, the following functions apply:

Denon DJ MC6000MK2 Control	Function	Shift
Video FX Knob 1	Highpass/Lowpass filter	Adjust Video FX 1 Wet/Dry
Video FX Knob 2	Highpass/Lowpass filter	Adjust Video FX 2 Wet/Dry
Video FX ON button	N/A	Turns Video FX 1 On
Video FX ON button	N/A	Turns Video FX 2 On
X-F Link Button	Links crossfader to Serato Video	Toggles Video transition

The MC6000MK2 also has a dedicated Video mode. To boot the unit up in dedicated Video mode hold [SHIFT+ VIDEO ON (x2)] at the same time, then turn on the MC6000MK2. Once the unit is turned on, press the BROWSER knob and the controller will now be in Video mode.

In the dedicated Video mode, the following functions control Serato Video:

Denon DJ MC6000MK2 Control	Function
Video FX Knob 1	Adjust Video FX parameter for Left Deck
Video FX Knob 2	Adjust Video FX parameter for Right Deck
Video FX ON button	Switch to Filter Mode
Video FX ON button	Switch to Video Mode

Pressing SHIFT will exit this mode and return to the original controller function.

MIDI

The MIDI feature in Serato DJ provides the ability to remap Serato DJ software functions to your primary Serato DJ controller, interface or mixer. You can also assign controls to a secondary MIDI controller to further enhance your performance.

[For more information on MIDI mapping with Serato DJ click here.](#)

To remap your supported Serato DJ device, open the **SETUP** screen and click the **MIDI** tab. If your Serato DJ device supports hardware remapping it will show up in the **MIDI Devices** list at the top.

Select your connected device from the MIDI Devices list and make sure the "Allow Serato Hardware Remapping" option is checked.

Allow Serato Hardware Remapping

Once checked, the MIDI assign button at the top of the screen will become available for you to start remapping.

MIDI

You can save, edit or delete MIDI presets in the **MIDI** tab of the **SETUP** screen. Clicking '**Restore Defaults**' will erase any custom mappings for all connected devices and revert their functions back to default.

[Download the Serato DJ software manual for further information.](#)

NOTE: Official Serato Accessories do not currently support user remapping. Hardware features that cannot be remapped at this stage are Jogwheels/Platters, Input Switches, Shift buttons and Performance Pad Mode buttons. Re-mapping any pad(s) in Hot Cue mode will also re-map the same pad in Saved Flip mode and vice versa.


NOTE: Output lighting is disabled for remapped controls on Denon hardware.

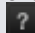
DVS Expansion

The Denon DJ MC6000MK2 is Serato DVS Upgrade Ready. Use turntables or CD players to control Serato DJ using NoiseMap™ Control Tone records or CDs. You can enable CD and Vinyl control through the Setup screen in the software after the DVS Expansion upgrade is purchased and activated inside the software.

For more information and to purchase the DVS Expansion, see <http://serato.com/dj/dvs>

Using the Tool Tips

Click on the  icon to enable Tool Tips. This is located in next to the setup button in the top right hand corner of the screen. Tool Tips provide a handy way to learn the various features of Serato DJ.

Move the mouse over a section of the screen to bring up a context sensitive tool tip. Holding the mouse over the  button with Tool Tips turned on will show you a list of all keyboard shortcuts.

For more information about how to use Serato DJ, please go to our website www.serato.com or refer to the Serato DJ Software Manual.

For more information on your controller, please refer to the hardware manual.

For further help, please contact support@serato.com or go to www.serato.com/dj/support

serato

