

QUICK-START GUIDE

RELOOP TERMINAL MIX 4

serato



Installation and Setup

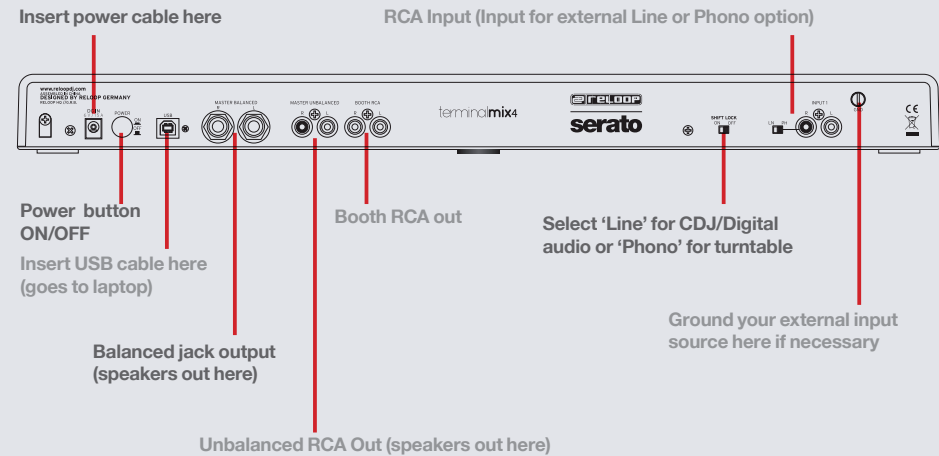
The Reelock Terminal Mix 4 is a class compliant USB plug and play device for Mac, however requires drivers for Windows. You will find these on the installation cd provided within your Reelock Terminal Mix 4.

NOTE: Please ensure you have the latest available drivers AND firmware updates, which may be required in order to be compatible with Serato DJ. Please go to <http://serato.com/dj/support>

1. Download and install the latest version of Serato DJ from <http://serato.com/dj/downloads>
2. After installing drivers, connect your Reelock Terminal Mix 4 to an available USB Port.
3. Open Serato DJ.

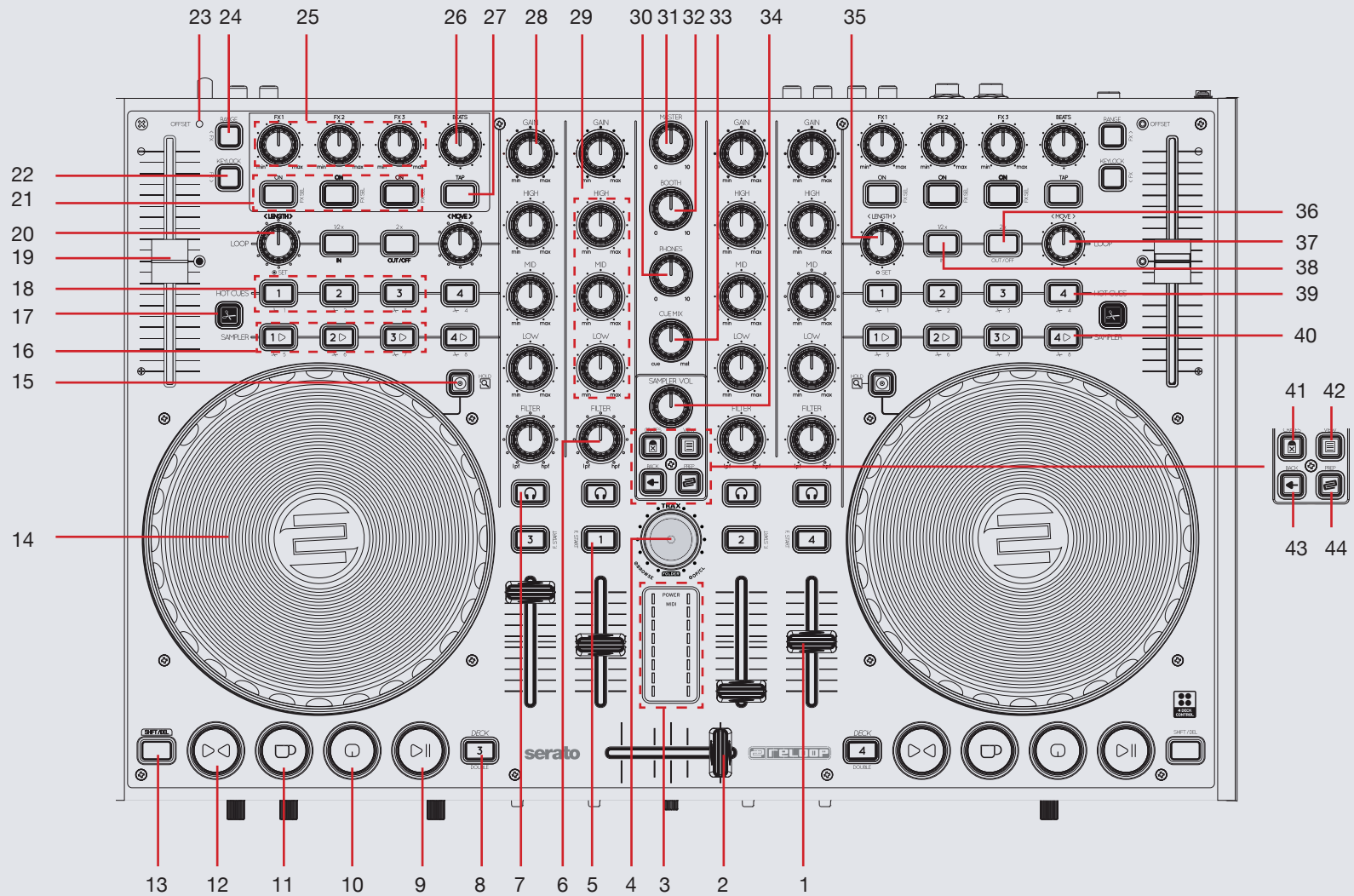
Serato DJ Activation

To find out how to activate Serato DJ by either starting your free 14 day trial, or purchasing a license for Serato DJ, [click here](#) for the most up to date information.



serato





NOTE: SHIFT button is used with other buttons that have shift modifier functions.


#	Reloop Terminal Mix 4 Control	Serato DJ Function	Shift Modification
1	CHANNEL FADER	Adjusts channel volume	
2	CROSSFADER	Crossfades between the two channels	
3	VU METER	LED representation of Master Output	
4	TRAX	Scroll through currently focused area (library/crates/etc)	
5	LOAD	Load track to selected deck	Activate Fader Start for that channel
6	FILTER	LP/HP filter combo adjust	
7	CUE CHANNEL	Cue selected channel in headphones	
8	DECK	Select Active Deck 1/3 (Left Deck) or 2/4 (Right Deck)	
9	PLAY/PAUSE	Play/Pause	
10	CUE	Temporary Cue	Jump to start of track (more than 2 Sec elapsed) Previous track (less than 2 sec elapsed)
11	CUP	Stutter Play	
12	SYNC	Sync On	Sync Off (Press twice to return to Absolute Pitch when in Relative Mode)
13	SHIFT/DEL	The SHIFT button is used with other buttons that have shift modifier functions.	
14	PLATTER	Scratch or Jog deck	Beat Skip
15	HOLD	Toggle between Scratch or Jog	Fast Library Scroll when used with Jog Wheel
16	SAMPLER 1-3	Trigger Samples 1-3 (Left Deck) or 4-6 (Right Deck)	Stop Samples 1-3 (Left Deck) or 4-6 (Right Deck)
17	SCISSORS	Activate Slicer Mode	
18	HOT CUE 1-4	Adds or triggers Cue Points 1-3	Delete Cue Points 1-3
19	TEMPO FADER	Adjust Tempo	When in Sync mode, used to disable the Pitch Fader temporarily and change the zero position

serato





#	Reloop Terminal Mix 4 Control	Serato DJ Function	Shift Modification
20	LOOP LENGTH (Knob)	Auto Loop On/Off or Exit Manual Loop (Click Knob) Auto Loop Length (Twist Knob)	Loop Roll On/Off (Click Knob) Change Loop Roll Length (Twist Knob)
21	FXSEL 1-3 (Buttons)	Slots 1-3 Effect On/Off	
22	KEYLOCK	Keylock On/Off	Assign FX UNIT 2 to Active Deck
23	OFFSET LED	If you switch the deck and move the pitch fader the value will be stored. The LED shows whether the pitch fader is at its initial value when setting back.	
24	RANGE	Cycles through available Tempo Range options	Assign FX UNIT 1 to Active Deck
25	FX 1-3 (Knobs)	Adjust Slots 1-3 FX Parameters	
26	BEATS	Adjust Beats Multiplier	
27	TAP (Button)	Tap to the desired FX tempo. To return to AUTO mode, press and hold	
28	GAIN	Adjust channel gain	
29	EQs	Adjust Low/Mid/High	
30	PHONES	Adjusts headphone volume	
31	MASTER	Adjusts master volume	
32	BOOTH	Adjusts booth volume	
33	CUE MIX	Adjusts between Cue and Master in your headphones	
34	SAMPLE VOL	Adjusts the master volume of the sample player	
35	LOOP LENGTH (Knob)	Auto Loop On/Off or Exit Manual Loop (Click Knob) Auto Loop Length (Twist Knob)	Loop Roll On/Off (Click Knob) Change Loop Roll Length (Twist Knob)
36	2X	Double Loop Length	Loop Out/Adjust Loop Out Position
37	LOOP MOVE	Loop Shift left/right (Twist Knob) or Reloop (Click Knob)	
38	1/2X	Halve Loop Length	

DJ-FX

The DJ-FX in Serato DJ are powered by iZotope™. Click the FX tab  to open the FX panel. Select either 1, 2, 3, 4 or M to assign the selected effect bank to a deck or Master Output. To activate an effect, click the ON button on your FX UNIT in the software, or the FX1 ON button on your controller. You can adjust effect parameters by using either software controls, or the FX1/FX2/FX3 knobs/buttons on the controller.

There are two available modes in the DJ-FX. Single FX Mode allows you to select one effect per FX bank, and has multiple parameters that can be adjusted. Multi FX Mode allows you to select up to three effects per FX bank, and adjust only one parameter, the FX Depth. The same effects available in Single FX mode are available in Multi FX mode, as well some additional presets.


You can select between the two FX modes by clicking either the Single FX mode button  or Multi FX mode button 

Reloop Terminal Mix 2 Control	Single FX Mode	Multi FX Mode
FXSEL 1 Button	Effect On/Off	Slot 1 Effect On/Off
FX1 Knob	Adjust Parameter 1	Adjust Slot 1 FX Parameter
FXSEL 2 Button	Adjust Parameter 2	Slot 2 Effect On/Off
FX2 Knob	Adjust Parameter 3	Adjust Slot 2 FX Parameter
FXSEL 3 Button	Adjust Parameter 4	Slot 3 Effect On/Off
FX3 Knob	Adjust Parameter 5	Adjust Slot 3 FX Parameter
SHIFT + FXSEL 1-3 Buttons	Select Effect	Select Effect in Slots 1-3
TAP	Tap to the desired FX tempo. To return to AUTO mode, press and hold	Tap to the desired FX tempo. To return to AUTO mode, press and hold
BEATS	Adjust Beats Multiplier	Adjust Beats Multiplier

NOTE: Use SHIFT + RANGE to assign FX UNIT 1 to the Active Deck. Use SHIFT + KEYLOCK to assign FX UNIT 2 to the Active Deck.

Looping



You have the choice of Auto or Manual Looping within Serato DJ with the Reloop Terminal Mix 4.

NOTE You can also save a loop to the next available free loop slot in the software. To do this, click  on an available loop slot. Your loops are saved to the file and recalled the next time it is loaded. They are not lost if the file is moved or renamed.

Reloop Terminal Mix 4 Control	Manual Loop Mode
1/2X + SHIFT	Set loop in point (Loop not active)
1/2X + SHIFT	Adjust loop in point (Loop active)
2X + SHIFT	Set loop out point (If loop in point is set)
2X + SHIFT	Adjust loop out point (Loop active)
Loop Length (Click Knob)	Exit Loop (Loop Active)

NOTE The best way to edit the in and out points of a manual loop is with the jog wheel/platter on your Reloop Terminal Mix 4.

Reloop Terminal Mix 4 Control	Auto Loop Mode
Loop Length (Click Knob)	Auto Loop ON/OFF
Loop Length (Twist Knob)	Half Auto Loop Length

NOTE You can also save a loop to the next available free loop slot in the software. To do this, either click the  button in the manual/auto loop tab or click  on an available loop slot. Your loops are saved to the file and recalled the next time it is loaded. They are not lost if the file is moved or renamed.

Slicer

Press the **SCISSORS** button to activate Slicer Mode. Slicer Mode is when a specified range (or domain) is divided into eight equal sections, and these eight sliced sections are assigned to the respective **HOT CUE** buttons 1-4 and **SAMPLER** buttons 1-4. When the playhead reaches the end of the Slicer Domain, the entire Domain will shift to the right.

When in Slicer Mode, turn the **LOOP LENGTH** knob to set the quantization for the slicer function. The quantization can be set in four ways: 1/8, 1/4, 1/2 and 1. Hold **SHIFT** and turn the **LOOP LENGTH KNOB** to set the domain. The domain can be set to one of six settings: 2 beats, 4 beats, 8 beats, 16 beats, 32 beats or 64 beats.

NOTE: Beatgrids are required on your tracks in order to use Slicer Mode.

#	Reloop Terminal Mix 4 Control	Serato DJ Function	Shift Modification
39	HOT CUE 4	Adds or triggers Cue Points 4	Deletes Cue Point 4
40	SAMPLER 4	Select Sample Bank	
41	CRATES	Cycle REC/FX/SP-6 Panels	Cycle SP-6/FX/REC panels
42	VIEW	Cycle view modes	Switches between 2 and 4 decks
43	BACK	Toggles focus between library/crates/open panels	
44	PREP	Loads track to prepare area	Open Prepare Panel

NOTE: #28 LOAD When used with SHIFT, activates Fader Start for each deck. This means the track will stop when the channel fader is down, and the track will start when the channel fader is up. The LOADbutton will flash when Fader Start is activated.

serato



MIDI

The MIDI feature in Serato DJ provides the ability to remap Serato DJ software functions to your primary Serato DJ controller, interface or mixer. You can also assign controls to a secondary MIDI controller to further enhance your performance.

[For more information on MIDI mapping with Serato DJ click here.](#)

To remap your supported Serato DJ device, open the **SETUP** screen and click the **MIDI** tab. If your Serato DJ device supports hardware remapping it will show up in the **MIDI Devices** list at the top.

Select your connected device from the MIDI Devices list and make sure the “Allow Serato Hardware Remapping” option is checked.

Allow Serato Hardware Remapping

Once checked, the MIDI assign button at the top of the screen will become available for you to start remapping.


MIDI


You can save, edit or delete MIDI presets in the **MIDI** tab of the **SETUP** screen. Clicking ‘**Restore Defaults**’ will erase any custom mappings for all connected devices and revert their functions back to default.

[Download the Serato DJ software manual for further information.](#)

NOTE: Official Serato Accessories do not currently support user remapping. Hardware features that cannot be remapped at this stage are Jogwheels/Platters, Input Switches, Shift buttons and Performance Pad Mode buttons. Re-mapping any pad(s) in Hot Cue mode will also re-map the same pad in Saved Flip mode and vice versa.

Using the Tool Tips

Click on the  icon to enable Tool Tips. This is located in between the MIDI and setup button in the top right hand corner of the screen. Tool Tips provide a handy way to learn the various features of Serato DJ.

Move the mouse over a section of the screen to bring up a context sensitive tool tip. Holding the mouse over the  button with Tool Tips turned on will show you a list of all keyboard shortcuts.

For more information about how to use Serato DJ, please go to our website www.serato.com or refer to the Serato DJ Software Manual. For more information on your controller, please refer to the hardware manual.

serato

