

**QUICK-START  
GUIDE  
ALLEN & HEATH  
XONE:DB2**

**serato**



# Installation and Setup

To activate Serato DJ with the Allen & Heath XONE:DB2 it requires a Serato DJ license to be purchased and activated on your user account. The XONE:DB2: DB2 also requires the DVS Expansion Pack to be purchased and activated before unit can be used with NoiseMap™ control tone to control DVS playback. [You can purchase both products here.](#)

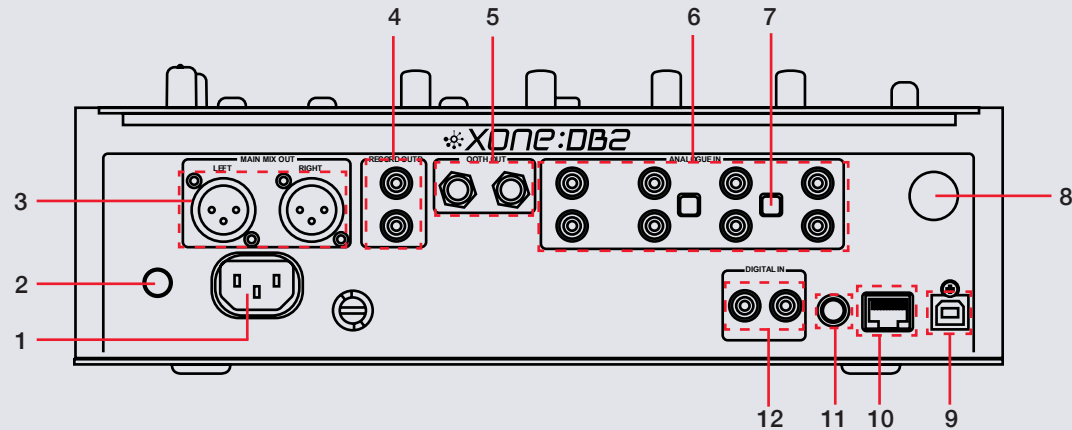
The Allen & Heath XONE:DB2 requires drivers on both Mac OS X and Windows. Please make sure you have the latest drivers installed. It is always important to connect your mixer directly to your computer, rather than a USB hub. Please also ensure you have installed the latest available version of Serato DJ.

To use the DVS Expansion Pack with the XONE:DB2 you will need to follow the steps in the [DVS Control section](#).

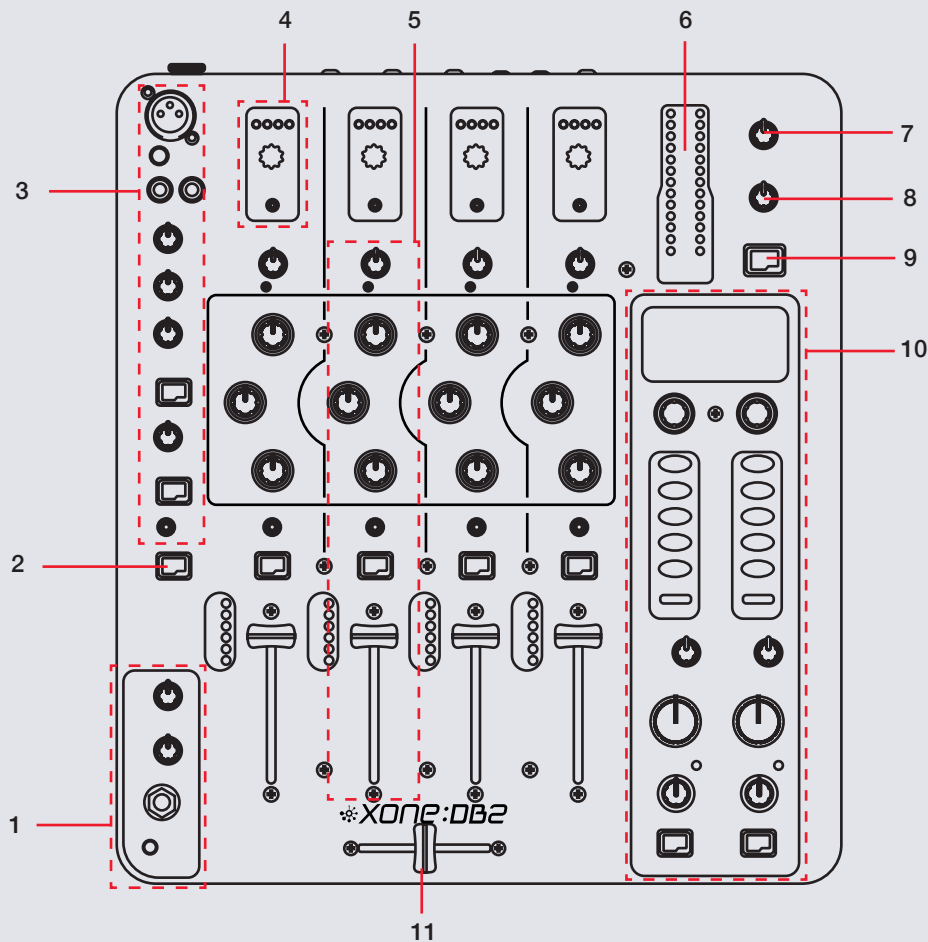
serato



# MIXER



| #  | XONE:DB2 Control    | Function   |
|----|---------------------|--|
| 1  | AC POWER IN         | Connect a power cable to your mixer  |
| 2  | ON/OFF              | Turn the mixer On/Off  |
| 3  | MAIN MIX OUT        | Connect balanced XLR cables to the main mix out                                      |
| 4  | RECORD OUT          | Connect RCA cables to the record out   |
| 5  | BOOTH OUT           | Connect Balanced TRS cables to booth out   |
| 6  | ANALOGUE IN         | Connect input sources  |
| 7  | INPUT SOURCE SWITCH | Select PH (Phono) for Phono input devices, select LN (Line) for Line input devices,. |
| 8  | GROUNDING POST      | Connect turntable grounding wires  |
| 9  | USB 2.0             | Connect USB cable to your computer   |
| 10 | X-LINK              | Connect X-Link cable to other Allen & Heath devices                                  |
| 11 | RECORD DIGITAL OUT  | Connect digital cables to record out   |
| 12 | DIGITAL IN          | Digital device inputs for each channel   |



| #  | XONE:DB2               | Function  |
|----|------------------------|---|
| 1  | HEADPHONE SECTION      | Headphone output and controls   |
| 2  | MIDI SHIFT             | Used in conjunction with XONE:DB2 midi controls                           |
| 3  | MIC SECTION            | Microphone input and controls   |
| 4  | INPUT SELECT           | Select channel input source   |
| 5  | CHANNEL CONTROLS       | Control and monitor channel volume and EQ controls                        |
| 6  | OUTPUT METER           | Displays output volume  |
| 7  | MIX                    | Control Mix output volume   |
| 8  | BOOTH                  | Control Booth output volume   |
| 9  | MENU                   | Access the XONE:DB2 Menu  |
| 10 | FX SECTION AND DISPLAY | FX-X and FX-Y Controls. XONE:DB2 information is shown on the LCD display. |
| 11 | CROSSFADER             | Fade audio between channels   |

## XONE:DB2 User Guide

For further information on XONE:DB2 controls and details on individual Menu features please refer to the Allen & Heath XONE:DB2 Hardware User Guide.

[Download the XONE:DB2 User Guide from the Allen & Heath website here.](#)

serato



# DVS Control

To use the Allen & Heath XONE:DB2 mixer with DVS control and Serato DJ, you will first need to own a Serato DJ license and a DVS Expansion Pack license (these two products have been bundled together as the **Club Kit**). [Click here to purchase the Club Kit](#)

Once you have purchased and activated the Club Kit (or individual licenses separately) follow the steps below to get DVS control working with your Allen & Heath XONE:DB2 mixer.

## Install Drivers

Connect your mixer and open the latest version of Serato DJ. You should see an **'INSTALL DRIVER'** dialogue box appear in the right hand side-panel. Click **'INSTALL DRIVER'** and follow the installer prompts. If you don't have the supported hardware with you right now you can still download the driver from the hardware manufacturers website.

## Select Input source

Once your turntables or CDJs are connected to the mixer, check that you are using the correct Input setting on the back of the mixer. If you have connected an analogue source (turntables), make sure you have the input set to PH (Phono), if you have connected a digital source (CDJs) make sure it is set to LN (Line) accordingly.

**NOTE:** If you want to connect an analogue source to channels 1 or 4, you will notice there is no switch on the rear of the mixer and will need to enable the hardware preamp for those channels. [See the XONE:DB2 user guide for more information.](#)

## Select Primary Decks

Open the **SETUP** screen and click the **AUDIO** tab, here you will need to select your Primary Decks.

Choosing Channel 1 and 2, will allow you to have a traditional 1-2-3-4 channel configuration. Choosing Channel 2 and 3 will allow you to have a 3-1-2-4 configuration (from left to right across the mixer).

Select which deck configuration you are using with the mixer and change if necessary. If you notice you are getting signal from your control tone but on the wrong deck, you might need to double-check your Primary Decks in the **SETUP** screen or the physical inputs on the back of the mixer.

You are now set up to use your mixer with Serato DJ and DVS control using the REL or ABS control modes. Refer to the Serato DJ manual for more information on Control Modes.

serato



## MIDI

The MIDI feature in Serato DJ provides the ability to remap Serato DJ software functions to your primary Serato DJ controller, interface or mixer. You can also assign controls to a secondary MIDI controller to further enhance your performance.

[For more information on MIDI mapping with Serato DJ click here.](#)

To remap your supported Serato DJ device, open the **SETUP** screen and click the **MIDI** tab. If your Serato DJ device supports hardware remapping it will show up in the **MIDI Devices** list at the top.

Select your connected device from the MIDI Devices list and make sure the "Enable MIDI device" option is checked.

Enable MIDI Device

Once checked, the MIDI assign button at the top of the screen will become available for you to start remapping.

MIDI

You can save, edit or delete MIDI presets in the **MIDI** tab of the **SETUP** screen. Clicking '**Restore Defaults**' will erase any custom mappings for all connected devices and revert their functions back to default.

[Download the Serato DJ software manual for further information.](#)

**NOTE:** Official Serato Accessories do not currently support user remapping. Hardware features that cannot be remapped at this stage are Jogwheels/Platters, Input Switches, Shift buttons and Performance Pad Mode buttons. Re-mapping any pad(s) in Hot Cue mode will also re-map the same pad in Saved Flip mode and vice versa.


## Recording


To record your mixes with Serato DJ and the XONE:DB2 you will need to set up the mixer for recording. Designate a channel to use for recording and then select this channel in the Serato DJ REC panel. This will allow you to record the software mix.

Designating a channel is done from the XONE:DB2 hardware using the **Menu** button and Display Screen. Select '**USB Routing**' from the Menu and select 'Record' on the channel you want to designate for recording. You will not be able to use this channel in Serato DJ while it is selected as a recording channel.

If you wish to record the video output, Serato Video output will only be sent to **Channel 4**. To record the video + audio mix you will need to make sure you have selected Channel 4 as your dedicated recording channel. See the XONE:DB2 User Guide for more information on Routing and Menu features.

## Using the Tool Tips

Click on the  icon to enable Tool Tips. This is located in between the MIDI and setup button in the top right hand corner of the screen. Tool Tips provide a handy way to learn the various features of Serato DJ.

Move the mouse over a section of the screen to bring up a context sensitive tool tip. Holding the mouse over the  button with Tool Tips turned on will show you a list of all keyboard shortcuts.

[For more information about how to use Serato DJ, please go to our website \[www.serato.com\]\(http://www.serato.com\) or download the Serato DJ Manual.](#)

[For more information on your XONE:DB2, please refer to the Allen & Heath XONE:DB2 manual.](#)

serato

